

SMART BRACELET



Never miss a message

The **SMART BRACELET** is a wrist wearable device capable of receiving messages from any BMSvision system. Messages are sent based on alarms generated by the BMSvision Events & Alerts module. The device promptly informs operators when there is a need to intervene on a machine.

For example, in case of a problem with a machine, the machine ID and a description of the problem are sent to the machine operator's bracelet. The vibration of the bracelet on the wrist is easily detected even in the loud environment of the shopfloor. Operators will therefore never miss a message and can act immediately in order to minimize downtime.

Features

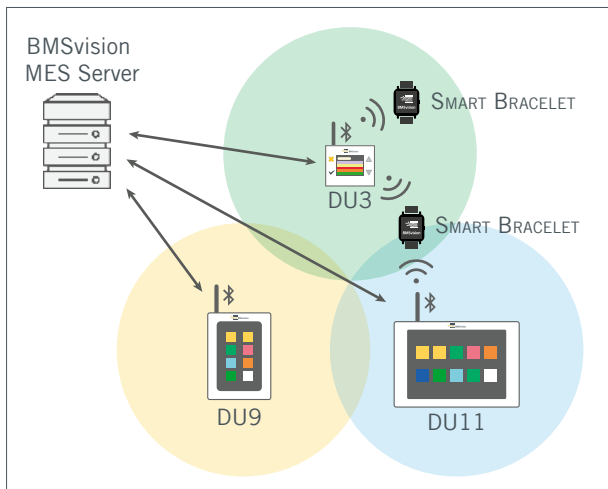
- Receipt of message is indicated with a vibration.
- Configurable messages.
- Gesture and touch controlled.
- Time and date synchronized with the BMSvision server.
- Receipt of messages can be disabled.
- Messages are stored until deleted by the operator.

Benefits

- Faster reaction to problems.
- Reduced machine downtime.
- Increased machine and operator efficiency.
- Reduced rejects due to shorter response times to quality problems.

Concept

The **SMART BRACELETS** can be assigned to individual operators or operator types. It is not required for the operators to be in the vicinity of their machines (configurable). Messages are sent via the Data Units to the nearby **SMART BRACELETS**.



Configuration examples

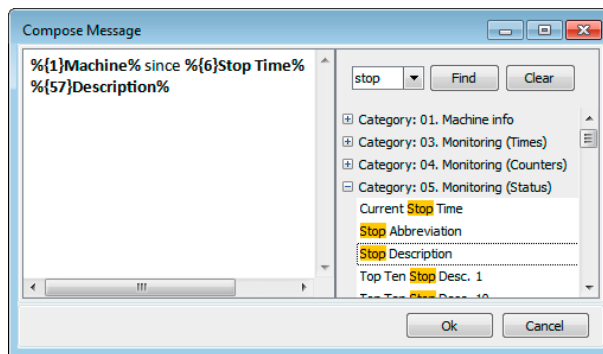
Definition of devices that are used to broadcast messages:

Description	Address	Enabled
BRA3	WSER11.0.56	<input checked="" type="checkbox"/>
BRA2	WSER11.0.52	<input checked="" type="checkbox"/>
BRAC	WSER11.0.51	<input checked="" type="checkbox"/>

Definition of the used **SMART BRACELETS**:

Reference num...	ID	Enabled	Remarks
6736	Bracel5-6736	<input checked="" type="checkbox"/>	
9821	Bracel5-9821	<input checked="" type="checkbox"/>	

Message composition:



Specifications

- Compatible with **DU11** (as of version 07), **DU9** and **DU3**.
- 176x176 pixel color graphics display with light and dark mode.
- Bluetooth Low Energy.
- Waterproof IP67.
- Several days battery life.
- Fast charging in a USB port.
- Multi-language, including Asian languages.

Prerequisites

- **PLANTMASTER** 8.40.3.
- Events & Alerts module.
- Compatible wireless Data Units (see specifications).

Part numbers

- **SMART BRACELET**: A434128.
- 8 port USB charger with power supply and cable: A589787.



BMSvision

In Pursuit of Productivity



www.bmsvision.com

© Belgian Monitoring Systems
Member of the **Savio**Group

BMS bv • Cotton Park, Spinnerijstraat 99/1, 8500 Kortrijk, Belgium
☎ +32 56 262 611 ☎ +32 56 262 690 ✉ sales@bmsvision.com

BMS Vision Ltd • Capricorn Park, Blakewater Road, Blackburn, Lancashire, BB1 5QR, United Kingdom
☎ +44 1254 662 244 ☎ +44 1254 267 100 ✉ sales@bmsvision.com

BMSvision LLC • 4420 Taggart Creek Road, Suite 112, Charlotte, North Carolina 28208, United States
☎ +1 704 392 9371 ☎ +1 704 399 5588 ✉ sales@bmsvision.com

BMSvision (Shanghai) Co., Ltd. • Room 402, Building A, No.800 Guangji Road, Hongkou District, Shanghai 200434, China
☎ +86 21 6044 4208 ✉ sales@bmsvision.com