

# Smart Bracelet

## Never miss a message



**The SMART BRACELET is a wrist wearable device capable of receiving messages from any BMSvision system. Messages are sent based on alarms generated by the BMSvision EVENTS & ALERTS module. The device promptly informs operators when there is a need to intervene on a machine.**

For example, in case of a problem with a machine, the machine ID and a description of the problem are sent to the machine operator's bracelet. The vibration of the bracelet on the wrist is easily detected even in the loud environment of the shopfloor. Operators will therefore never miss a message and can act immediately in order to minimize downtime.

### Features

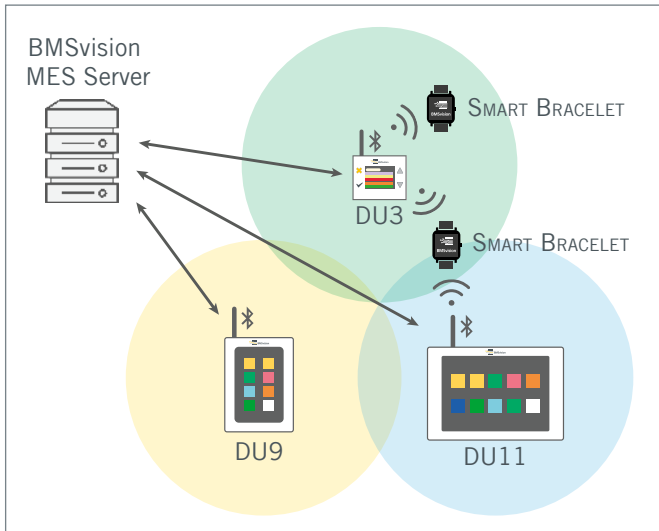
- Receipt of message is indicated with a vibration.
- Configurable messages.
- Gesture and touch controlled.
- Time and date synchronized with the BMSvision server.
- Receipt of messages can be disabled.
- Messages are stored until deleted by the operator.

### Benefits

- Faster reaction to problems.
- Reduced machine downtime.
- Increased machine and operator efficiency.
- Reduced rejects due to shorter response times to quality problems.

## Concept

The SMART BRACELETS can be assigned to individual operators or operator types. It is not required for the operators to be in the vicinity of their machines (configurable). Messages are sent via the DATA UNITS to the nearby SMART BRACELETS.



## Configuration examples

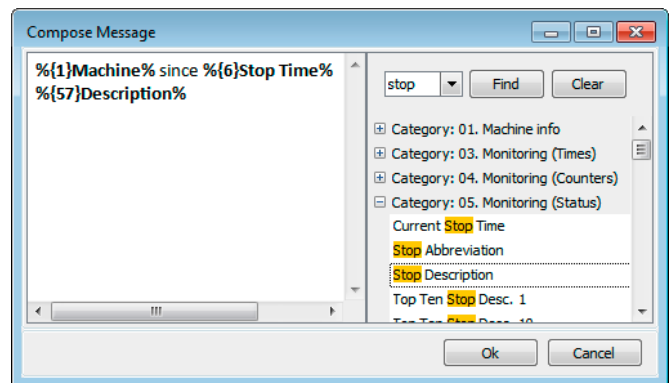
Definition of devices that are used to broadcast messages:

| Description | Address     | Enabled                             |
|-------------|-------------|-------------------------------------|
| BRA3        | WSER11.0.56 | <input checked="" type="checkbox"/> |
| BRA2        | WSER11.0.52 | <input checked="" type="checkbox"/> |
| BRAC        | WSER11.0.51 | <input checked="" type="checkbox"/> |

Definition of the used SMART BRACELETS:

| Reference num... | ID           | Enabled                             | Remarks |
|------------------|--------------|-------------------------------------|---------|
| 6736             | Bracel5-6736 | <input checked="" type="checkbox"/> |         |
| 9821             | Bracel5-9821 | <input checked="" type="checkbox"/> |         |

Message composition:



## Specifications

- Compatible with DU11 (as of version 07), DU9 and DU3.
- 176x176 pixel color graphics display with light and dark mode.
- Bluetooth Low Energy.
- Waterproof IP67.
- Several days battery life.
- Fast charging in a USB port.
- Multi-language, including Asian languages.

## Prerequisites

- BMSvision MES-system 8.40.3.
- EVENTS & ALERTS module.
- Compatible wireless DATA UNITS (see specifications).

## Part numbers

- SMART BRACELET: A434128.
- 8 port USB charger with power supply and cable: A589787.

